

SHARP

XG-MB70X/PG-MB60X
True XGA Multimedia Projectors

High-Brightness, High-Contrast, High-Performance DLP Projectors with Slim Body and Superb Dust Resistance



Notevision

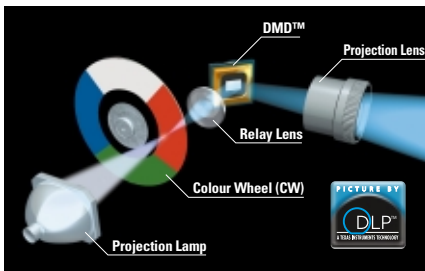


* The projected light is a simulated image.

Slim-Bodied, High-Performance DLP Projectors Expand Application Po

Cutting-Edge DLP Technology Provides All-Around Advantages in its Performance

The XG-MB70X/PG-MB60X projectors both employ a DLP™ system for the display device that controls the DMD™ (Digital Micromirror Device) chip, which contains many thousands of micromirrors on the silicon chip, reflecting light to display images.



Slim, Lightweight and Compact Design

With the DLP™ system, the XG-MB70X/PG-MB60X projectors present a slim (89 mm) body without hindering presentations, helping your business with numerous applications.

3000 ANSI Lumen (XG-MB70X)/2500 ANSI Lumen (PG-MB60X) High Brightness

Sharp's advanced optoelectronics technology maximizes light output, providing excellent uniformity and amazingly high brightness in this size of projector.

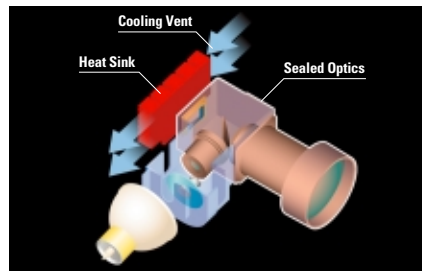
2000:1 High Contrast for Big Screen Projection (XG-MB70X only)

The DLP™ optical system prevents light leakage compared with LCD projection and provides sharper blacks in black parts and a 2000:1 high contrast ratio as well as employing an iris developed in Sharp theatre projectors. (1200:1 for the PG-MB60X) The XG-MB70X/PG-MB60X projectors are thus ideal for large-screen theatre projection, providing high-quality pictures for DVD*, HDTV and education videos. They are also compatible with worldwide broadcast signals such as NTSC, PAL and SECAM.

* A separate DVD player is needed for viewing DVDs.

Sealed Optics

The optical mechanism of DLP™ system projectors is sealed in its structure, preventing dust, dirt and smoke from the entering core parts of the optics to a much greater degree than with LCD projectors. The system also needs no filter and less maintenance, resulting in lower cost of ownership and longer use.



Long-life High-Performance DMD™ Panel

DMD™ silicon chip formation with finely structured mirrors provides stable performance and delivers high-quality pictures for longer periods. The DMD™ chip in the XG-MB70X/PG-MB60X achieves a lifetime of 20,000 hours*.

Also, because there is no burn-in or remaining afterimage, the projectors are ideal for still picture projection such as for guidance board applications and projecting CAD images.

* The lifespan is measured at the surrounding temperature of 25°C. This is a reference value and is not guaranteed.

And More Advantages

The projectors provides better compensation of picture uniformity.

3x Speed Colour Wheel

The projectors employ a primary colour wheel with a 3x speed engine, providing much shorter projection time and thus improving colour break-up to an invisible level. Also, the non-contact air bearings for the high-speed rotating colour wheel axle have a longer lifespan as well as reduce noise, especially unpleased high frequencies, and enable quiet operation at 32dB (XG-MB70X) and 30dB (PG-MB60X) in Eco Mode.

Improved Projection Performance

Auto Focus and Power Zoom Lens (XG-MB70X)

The XG-MB70X employs auto focus and a power zoom lens, eliminating the hassle of adjusting the picture on the screen. You can start presentations quickly and comfortably. (PG-MB60X employs power focus and a power zoom lens.)



Short Throw Lens (Optical 1.5X Zoom Lens)

The newly developed Short Throw Lens achieves 60-inch large screen projection even from the short distance of 1.8m. In addition, the projector can be mounted more flexibly with the 1.5x zoom lens.

XG-MB70X/PG-MB60X

Correlation of XG-MB70X/PG-MB60X to Screen

Side View

Screen Size and Projection Distance

NORMAL Mode (4:3)

Diag. (inches)	Screen size		Projection distance (L)		Distance from the bottom of the images to the lens center (-H)
	Width (cm)	Height (cm)	Minimum	Maximum	
300	610	457	9.1m	13.7m	10.2cm
100	203	152	3.0m	4.6m	3.4cm
60	122	91	1.8m	2.7m	2.0cm
40	81	61	1.2m	1.8m	1.4cm

STRETCH Mode (16:9)

Diag. (inches)	Screen size		Projection distance (L)		Distance from the bottom of the images to the lens center (-H)
	Width (cm)	Height (cm)	Minimum	Maximum	
250	553	311	8.2m	12.4m	61.1cm
100	221	125	3.3m	5.0m	24.5cm
60	133	75	2.0m	3.0m	14.7cm
40	89	50	1.3m	2.0m	9.8cm

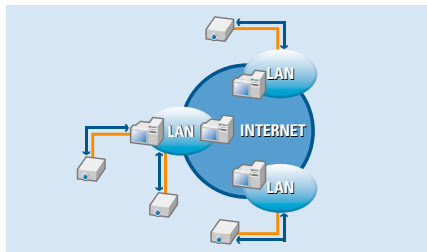
Possibilities Ranging from Business to Education



Network Possibilities

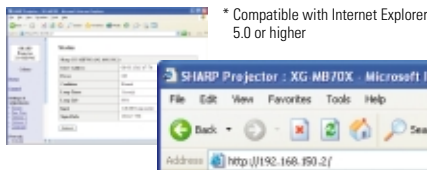
LAN Connection (XG-MB70X only)

Incorporating terminals for LAN connection as standard features, the XG-MB70X enables turning the power on or off and switching inputs without using special software. It is also possible on a network to monitor and control projectors for overall execution.



Remote Access and Management (XG-MB70X only)

Newly developed web browser control* enables remote access and management of the projector without special software. In addition, it sends e-mail to a maximum of five appointed addresses when detecting something wrong such as the lamp going out, unusual heating or cooling fan breakdown.



* Compatible with Internet Explorer 5.0 or higher

Smooth Presentation Even for Beginners

Remote Control with Mouse

Screen displaying presentation software such as PowerPoint® can be easily moved forward/backward and the cursor can be moved by remote control.



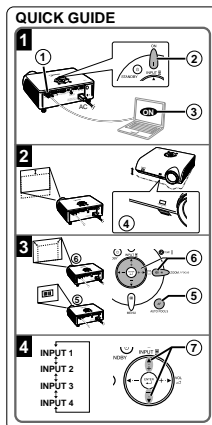
The remote control pictured is for the XG-MB70X.

Intuitive Layout of Buttons and Terminal Layout

For intuitive button layout, essential and frequently used buttons for basic operations, setup and image adjustment are located close together. This layout allows simple setup and operation for anybody. And, a wide variety of AV/PC terminals are effectively placed with colour guidance.

Quick Guide

Any person first using the XG-MB70X/PG-MB60X can quickly set up and use it with just a quick glance at the reference sticker enclosed. Placing the sticker close to operation buttons simplifies basic operation by eliminating the need to check operation manuals.



The illustration shown above is for the XG-MB70X.

Security & Safety

Notevision Lock-Down Function

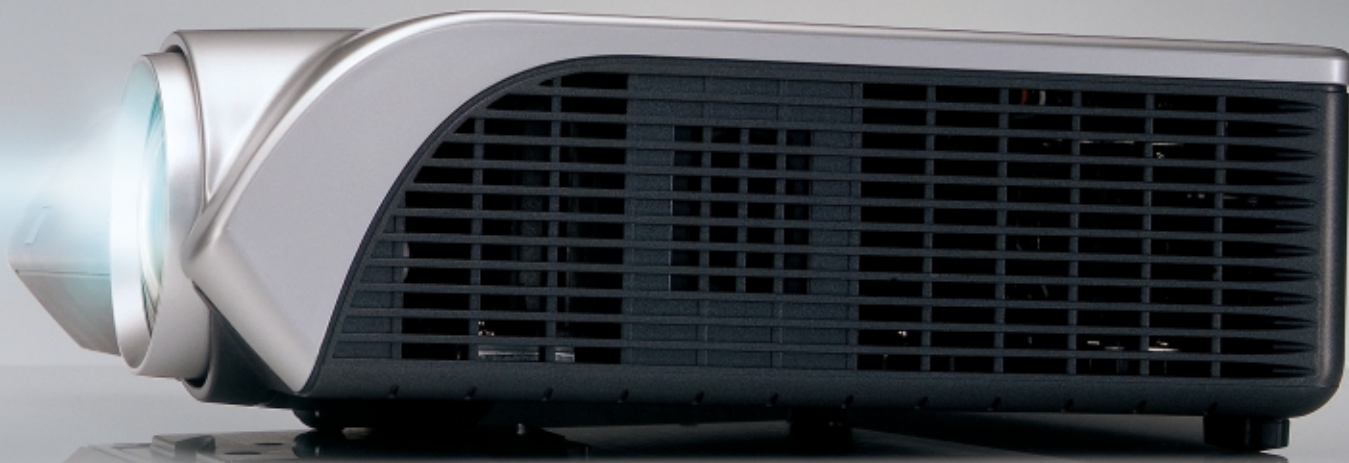
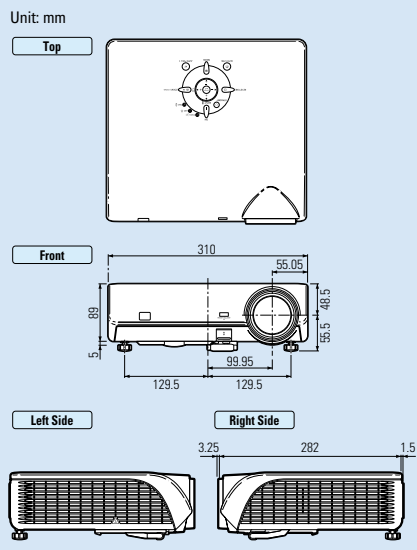
The optical unit provides a solid mounting point for ceiling mount hardware, and the joint area is reinforced by a metal plate. This achieves a maximum loading capacity of 5,700N*. Static Load Capacity on the XG-MB70X/PG-MB60X: Maximum 5,700N (equivalent to a 580kg object hung on the projector) (When hanging with four mounting points)

* N (Newton) is the unit for force. When hanging a 1-kg object to the ceiling mounted projector, the projector is subjected to a force equivalent to 10N. (Based on Sharp load test)

Other Outstanding Features

- 32dB (XG-MB70X)/30dB (PG-MB60X) Low Noise Level in Eco Mode
- True XGA Compatibility/SXGA+ (1,400 x 1,050) compatible in intelligent compression
- sRGB Compatibility
- Auto Response Adjust (ARA)
- Digital Keystone Correction compensates for picture distortion
- Simple Key Lock and System Lock Function
- Enlarge & Freeze
- Storage Case

Dimensional Drawings



* The projected light is a simulated image.



XG-MB70X



Rear Terminals (XG-MB70X)







PG-MB60X



Rear Terminals (PG-MB60X)

Optional Accessories

<p>Lamp</p>  <p>AN-MB70LP for XG-MB70X/ AN-MB60LP for PG-MB60X</p>	<p>Adaptor</p>  <p>AN-A1RS DIN-D-sub RS-232C adaptor (15 cm)</p>	<p>Cable</p>  <p>AN-C3CP2 3-RCA to 15-pin D-sub cable (3 m)</p>	<p>Ceiling Mounts</p>  <p>AN-TK201 For high ceiling installation</p> <p>AN-TK202 For standard ceiling installation</p> <p>AN-60TK Installation adaptor</p>
--	---	--	--

Note: Some of the optional accessories may not be available depending on the region. Please check with your nearest Sharp Authorized Projector Dealer or Service Center.

Specifications

Model	XG-MB70X	PG-MB60X
Panels	0.7" DMD	
Number of pixels	786,432 dots (1,024 x 768; h x v)	
Resolution	550 TV lines (video input), 750 TV lines (DTV 720P input)	
Video/data systems	RGB input signals: SXGA+, SXGA, Mac 21" (in intelligent compression), XGA, SVGA, VGA, VESA, Mac 19"/16"/13", 15-70 kHz (horizontal), 43-85 Hz (vertical), 12-108 MHz (pixel clock) (plug & play VESA: DDC 1/2/8) Video colour systems: NTSC/NTSC 4.43/PAL/PAL (60Hz)/PAL-M/PAL-N/SECAM/ DTV [480I/480P/540P/580I/580P/720P/1035I/1080I(50Hz/60Hz)]	
Lens	1:1.5 power zoom and auto focus with iris	1:1.5 power zoom and power focus
Projection size	40" (102 cm) to 300" (762 cm)	
Projection distance	40" (102 cm): 1.2 – 1.8 m, 100" (254 cm): 3.0 m – 4.6 m, 300" (762 cm): 9.1 – 13.7 m	
Luminance	3,000 ANSI lumen in High Brightness Mode (Standard Mode) 2,600 ANSI lumen in High Brightness Mode (Eco Mode)	2,500 ANSI lumen in High Brightness Mode (Standard Mode) 2,000 ANSI lumen in High Brightness Mode (Eco Mode)
Contrast ratio	2,000:1 (High contrast mode)	1,200:1
Audio amplifier	2W (mono)	
Speakers	4 x 2.85 cm (oval) x 1	
Input terminals	Computer RGB / component x 2 (15-pin mini D-sub), video x 1 (RCA), S-video x 1, audio L/R x 1 (ø3.5 mm mini jack), RS-232C serial x 1 (9-pin mini DIN), USB x 1, LAN x 1 (RJ-45) (XG-MB70X only)	
Output terminals	Computer RGB / component x 1 (15-pin mini D-sub), audio L/R x 1 (3.5 mm stereo mini jack)	
Power source	100-240V AC, 50/60 Hz (Multi-Voltage)	
Power consumption	370W (Standard Mode), 320W (Eco Mode), 6W (Standby) with AC 100V 350W (Standard Mode), 300W (Eco Mode), 8W (Standby) with AC 240V	270W (Standard Mode), 220W (Eco Mode), 5W (Standby) with AC 100V 255W (Standard Mode), 210W (Eco Mode), 6W (Standby) with AC 240V
Heat dissipation	1,390 BTU/hour (Standard Mode), 1,200 BTU/hour (Eco Mode) with AC 100V 1,315 BTU/hour (Standard Mode), 1,130 BTU/hour (Eco Mode) with AC 240V	1,015 BTU/hour (Standard Mode), 960 BTU/hour (Eco Mode) with AC 100V 960 BTU/hour (Standard Mode), 760 BTU/hour (Eco Mode) with AC 240V
Fan noise	35 dB (Standard Mode), 32 dB (Eco Mode)	35 dB (Standard Mode), 30 dB (Eco Mode)
Projection lamp	275W	200W
Lamp life*1	2,000 hours (Standard Mode) / 3,000 hours (Eco Mode)	
Dimensions (W x H x D)	310 x 89 x 282 mm (main body only), 310 x 104 x 287 mm (including adjuster legs and lens)	
Weight	4.1 kg	4.0 kg

Design and specifications are current as of November 2004, but are subject to change without notice.

* Digital Light Processing, DLP and the DLP medallion are trademarks of Texas Instruments.

* All company and/or product names are trademarks and/or registered trademarks of their respective manufacturers.

Sharp makes no warranties of representations of any kind with respect to these products.

*1 The lamp life may vary depending on the usage condition.



Pixelworks ICs are used in this projector.

SHARP

SHARP CORPORATION OSAKA, JAPAN

URL <http://www.sharp-world.com/>